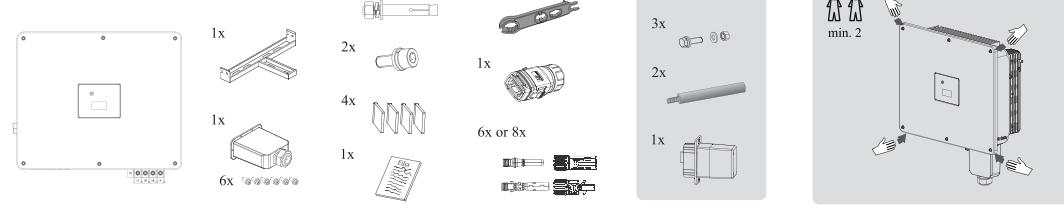


# QUICK INSTALLATION GUIDE

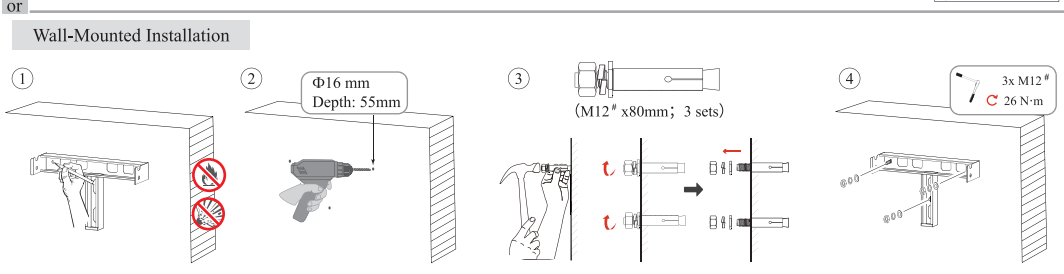
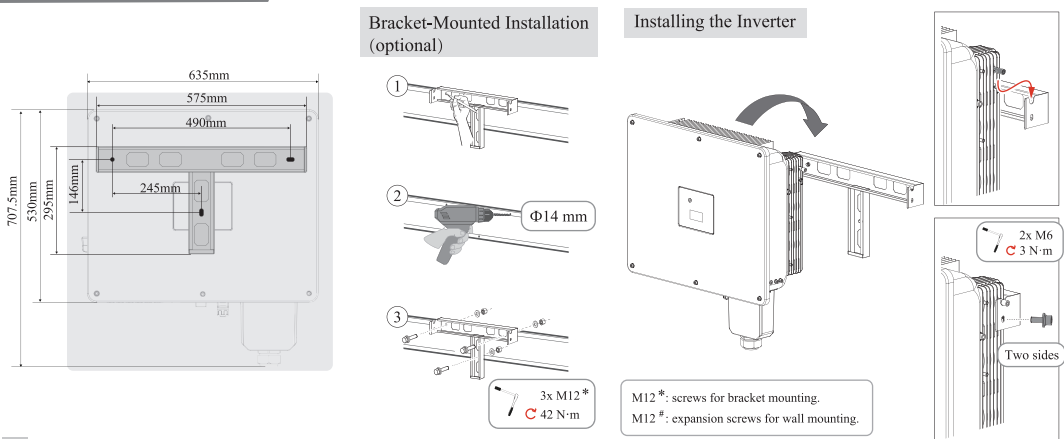


Three-Phase Grid-Tied Solar Inverter 30K/40K/50K

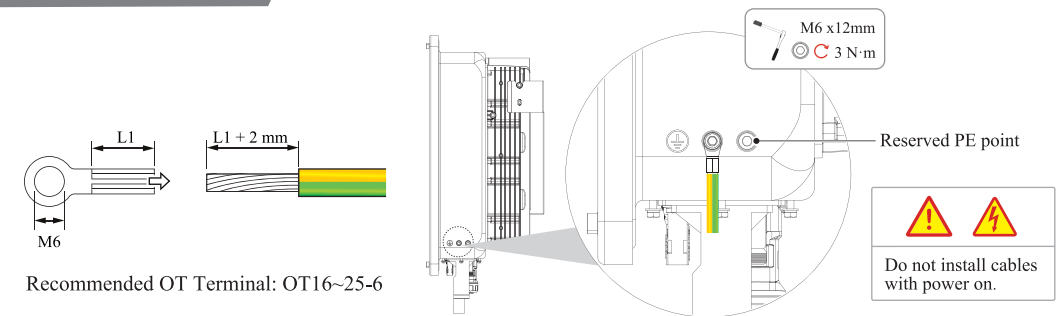
## 1 PACKING LIST



## 2 INSTALLATION

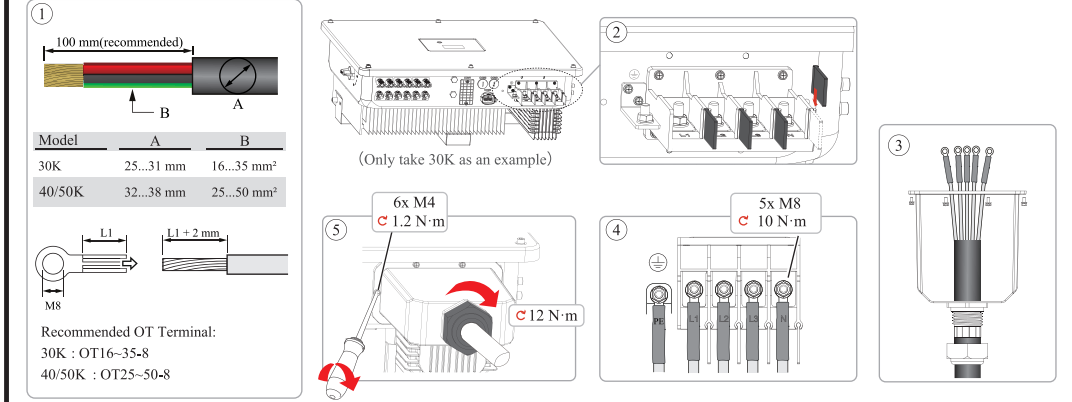


## 3 GROUNDING



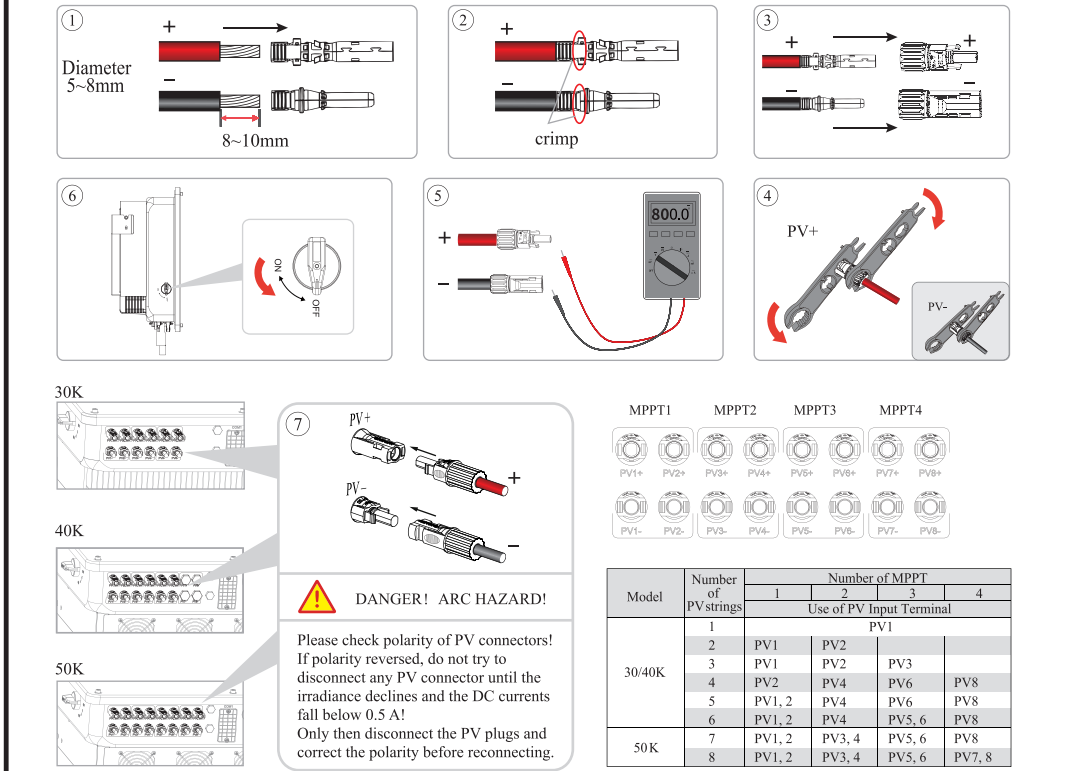
## 4 AC CONNECTION

**⚠ Before connecting the AC terminal, ensure that both the AC terminal and the DC terminal are powered off and the DC switch is OFF. Otherwise there is a risk of high voltage shock.**



## 5 PV CONNECTION

**⚠ 1. Photovoltaic arrays exposed to sunlight will generate dangerous voltages!  
2. Before connecting the DC terminal, ensure that both the AC terminal and the DC terminal are powered off and the DC switch is OFF. Otherwise there is a risk of high voltage shock.**



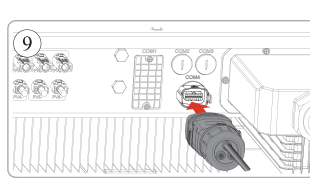
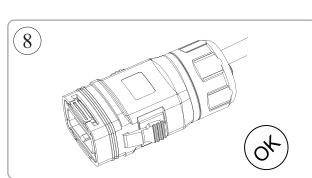
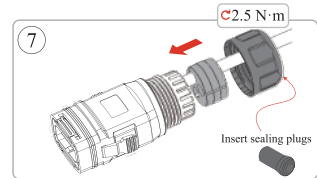
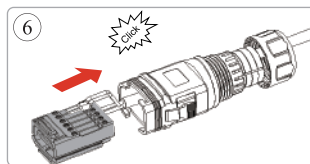
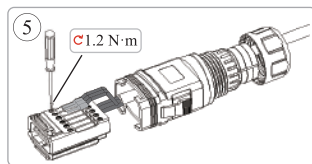
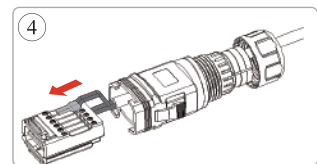
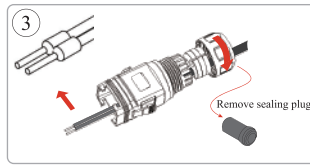
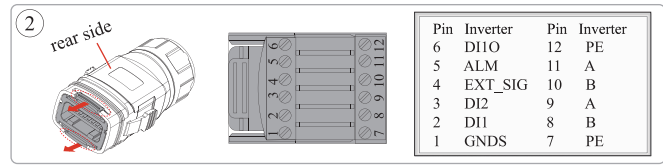
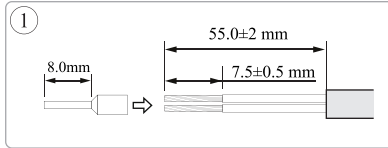
Note: DC cable should be dedicated PV cable (suggest using 4~6mm<sup>2</sup> PV1-F cable).

## 6 RS485 CONNECTION

### RS485 Terminal Overview



Note:  
Please connect the RS485 signal cables at the rear side of this terminal.



### RS485 communication address setting

#### ① Download the APP.

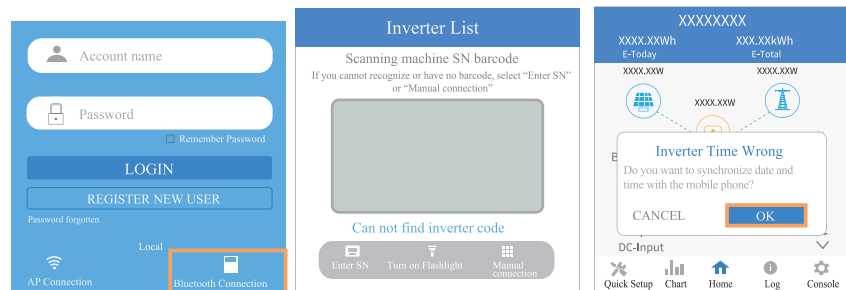
- Scan the QR code on the inverter to download the APP.
- Download the APP from the App Store or Google Play.

Note: the APP should access some permissions such as inverter's location. You need to grant all rights in all pop-up windows when installing the APP or setting your phone.

#### ② Power on the inverter.

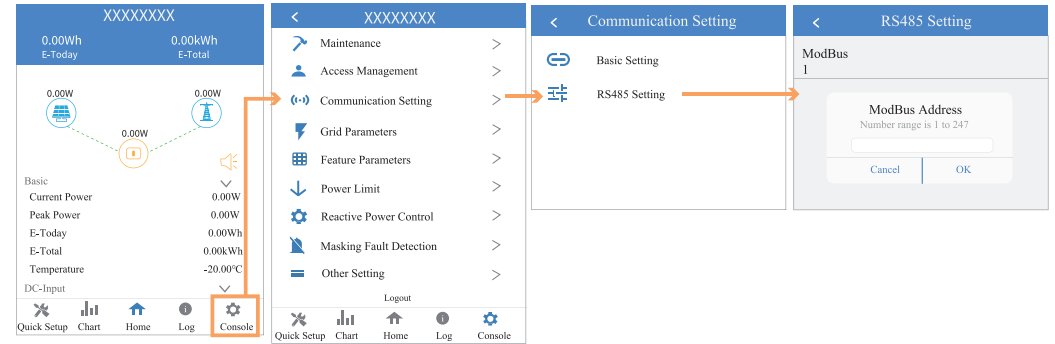
#### ③ Connect the Inverter.

Open the Bluetooth on your own phone, then open the APP. Then follow the instructions below.



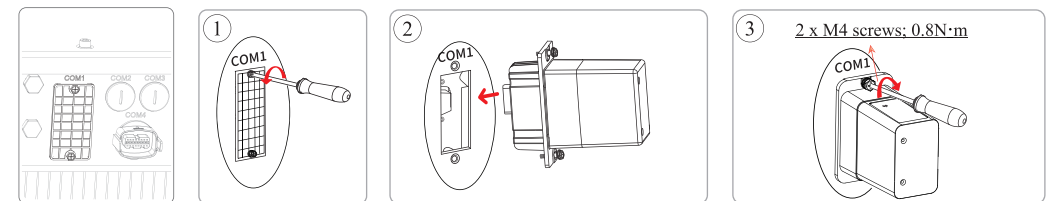
### RS485 communication address setting

- Go to Console > Communication Setting > RS485 Setting > Modbus Page, check the Modbus address (the default value is 1), and click to modify the address as required if necessary.



## 7 WIFI/GPRS/4G MODULE INSTALLATION (OPTIONAL)

Note: for details, please refer to the corresponding Module Installation Guide in the packing.  
The appearance of actual modules may be slightly different. The figure shown here is only for illustration.



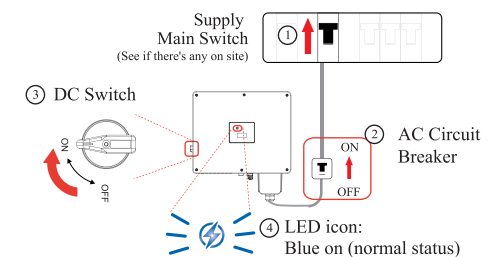
## 8 STARTUP / SHUTDOWN PROCEDURE

### Inspection

No.	Items
1	The inverter is firmly installed.
2	There is enough heat dissipation space, no external objects or parts left on the inverter.
3	It is convenient for operation and maintenance.
4	The wiring of the system is correct and firm.
5	Check whether the DC and AC connections are correct with a multimeter, and whether there is a short circuit, break, or wrong connection.
6	Check whether the waterproof nuts of each part are tightened.
7	The vacant port has been sealed. All gaps at the cable inlet and outlet holes have been plugged with fireproof/waterproof materials, such as fireproof mud.
8	All safety labels and warning labels on the inverter are complete and without occlusion or alteration.

After the inverter is powered off, the remaining electricity and heat may still cause electric shock and body burns.  
If need to disconnect the inverter cables, please wait at least 30 minutes before touching these parts of inverter.

### Startup Procedure



### Shutdown Procedure

