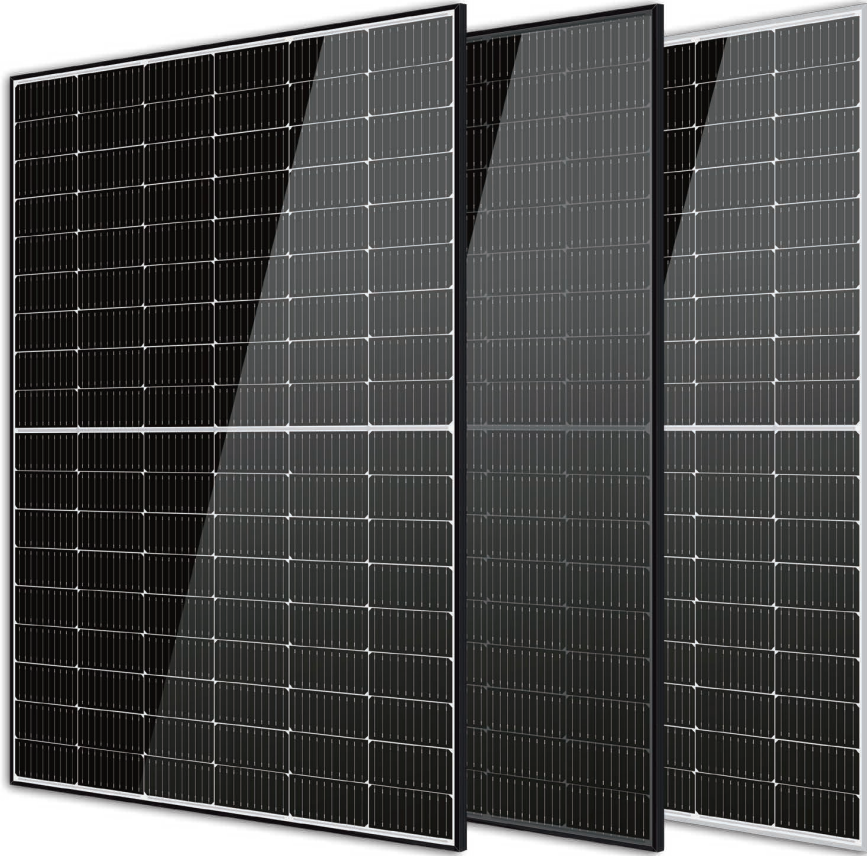
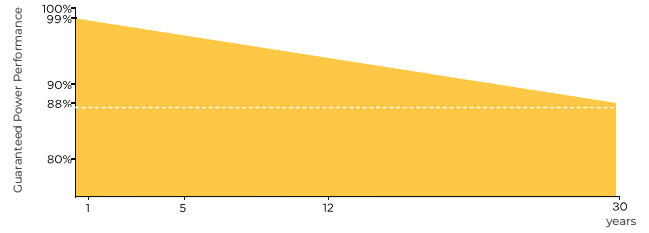




Europe based  
aftersale service  
Company HQ in Spain

## LINEAR PERFORMANCE WARRANTY



# BE425-445T8-108(HC)

## N-TYPE



### SMBB Technology

Better light trapping and current collection to improve module power output and reliability.



### PID Resistance

Excellent Anti-PID performance guarantee via optimized mass-production process and materials control.



### Durability Against Extreme Environmental Conditions

High salt mist and ammonia resistance



### Hot 2.0 Technology

The N-type module with Hot 2.0 technology has better reliability and lower LID/LETID.



### Enhanced Mechanical Load

Certified to with stand: wind load (2400 Pascal) and snow load (5400 Pascal).



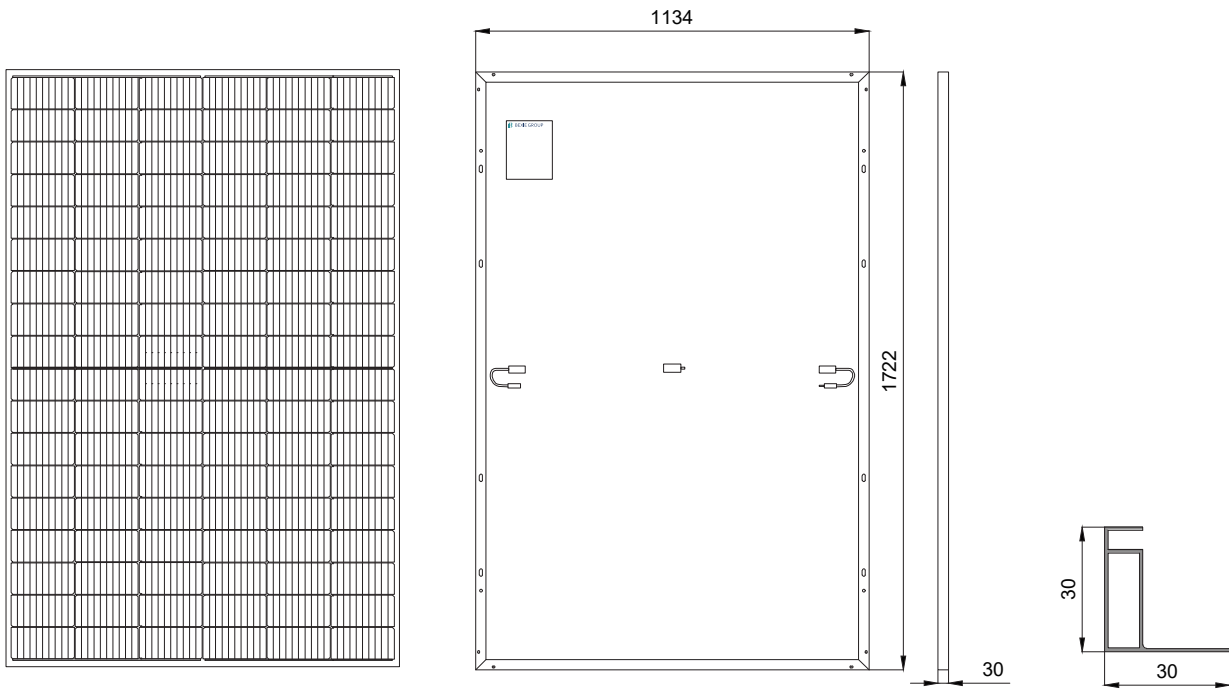
+34 985 194 232

CALLE COVADONGA 5, 33002 (OVIEDO, ASTURIAS)

[www.bexiegroup.com](http://www.bexiegroup.com)

# BE425-445T8-108(HC)

## N-TYPE



TYPE	BE425T8-108(HC)		BE430T8-108(HC)		BE435T8-108(HC)		BE440T8-108(HC)		BE445T8-108(HC)	
	STC	NOCT	STC	NOCT	STC	NOCT	STC	NOCT	STC	NOCT
Maximum Power	425	320	430	323	435	327	440	331	445	335
Max. Voltage, Vmpp (V)	32,18	29,99	32,38	30,1	32,59	30,33	32,81	30,56	33,02	30,76
Current, Imp (A)	13,21	10,67	13,28	10,73	13,35	10,78	13,41	10,83	13,48	10,89
Voltage Open Circuit, Voc (V)	38,75	36,81	39,95	37	39,16	37,2	39,38	37,41	39,59	37,61
Short Circuit Current, Isc (A)	13,66	11,03	13,73	11,09	13,8	11,14	13,86	11,19	13,93	11,25
Module Efficiency (%)	21,76		22,02		22,28		22,53		22,79	
Max. Power Tolerance (W)	0-5									
Max. System Voltage (V)	1000/1500VDC (IEC)									
Maximum Series Fuse Rating (A)	25A									

STC: Irradiance 1000 W/m<sup>2</sup>, Cell Temperature 25°C, AM 1.5 NOCT: Irradiance 800 W/m<sup>2</sup>, Temperature 20°C, Wind Speed 1 m/s

MECHANICAL SPECIFICATIONS	
Dimensions	1722*1134*30mm
N° of cells	108 (2x54)
Cells	N type Mono-crystalline
Front glass	3.2mm, Anti-Reflection Coating, High Transmission, Low Iron, Tempered Glass
Packaging Configuration	37pcs/Pallet; 962pcs/40HQ Container
Weight	22kg
Junction Box	IP68 Rated
Frame	Anodized aluminum alloy
Cable	4mm <sup>2</sup>

### I- V CURVES

Cells Temperature: 25°C. Current-Voltage & Power Voltage Curve (435)

